

# Investigation of EEG changes during exposure to extremely low-frequency magnetic field to conduct brain signals

S. A. Shafiei · S. M. Firoozabadi ·  
K. Rasoulzadeh Tabatabaie · M. Ghabaee

Received: 1 February 2014 / Accepted: 3 May 2014  
© Springer-Verlag Italia 2014

**Abstract** There are evidences that confirm the effect of magnetic fields (MFs) on brain signals and some psychological disorders such as headache, migraine and depression. The aim of the present study was to investigate changes in EEG power spectrum due to localized exposure in different parts of the brain by extremely low-frequency magnetic fields (ELF-MFs) to extract some protocols for treatment of some psychological disorders. In addition, regular effects were investigated by increasing intensity of ELF-MF. Therefore, EEG relative power spectrum was evaluated at T4, T3, F3, F4, and Cz points, when all the points were exposed to MFs with 45, 17, 10, 5, and 3 Hz frequencies, separately. Intensity of MF was 0, 100, 240, or 360  $\mu$ T in four sessions. Significant changes were observed in different EEG bands caused by locally exposing to ELF-MF in different points of brain ( $P < 0.05$ ). Some exposure

to MFs decreased alpha band of frontal and central areas in closed-eyes state. Based on the findings in this study, some protocols can be designed using a combination of various MFs exposures to conduct the brain signals that is necessary to evaluate clinically.

**Keywords** ELF magnetic fields · EEG · Local exposure · Regular effects · Psychological disorders

## Introduction

Recently, there has been increasing scientific evidence that extremely low-frequency magnetic fields (ELF-MFs) can influence the biological systems. The long-term ELF-MFs (50 Hz, 1 mT) may reduce the bone quality by affecting mineralization and collagen integrity [1]. Combination of weak static and ELF-MF affects tumor growth [2]. The magnetic fields (MFs) reduced the human's attention, the perception performance and the recognition accuracy [3, 4]. Also, there are evidences that confirm the effect of MFs on headache, migraine [5] and some psychological disorders such as depression [6, 7].

Some researchers have investigated the effects of pulsed and sinusoidal MFs on the brain activity by analyzing the main frequency bands of the EEG power spectrum [8–16]. These studies usually take the advantage of a uniform field produced by Helmholtz coils, which encompass the head. Therefore, all neurons and EEG sources in the brain are equally exposed to MF. Moreover, they have used a wide variety of experimental designs and exposure conditions. As a result, no regular effects are observed while changing amplitude, frequency, and duration [17]. In the present study, the existence of such a regular effect in the local exposure of different parts of head was investigated by increasing

---

S. A. Shafiei  
Biophysics-Biochemistry Department, School of Medicine,  
Rafsanjan University of Medical Sciences (RUMS),  
Rafsanjan, Iran  
e-mail: sashafiei@rums.ac.ir

S. M. Firoozabadi (✉)  
Department of Medical Physics, Tarbiat Modares University,  
Tehran, Iran  
e-mail: pourmir@modares.ac.ir

K. R. Tabatabaie  
Department of Psychology, Tarbiat Modares University, Tehran,  
Iran  
e-mail: rasoolza@modares.ac.ir

M. Ghabaee  
Iranian Center of Neurological Research, Imam Khomeini  
Hospital, Tehran University of Medical Sciences, Tehran, Iran  
e-mail: ghabaem@tums.ac.ir

intensity of ELF-MF in one group. Moreover, the changes within the EEG frequency bands due to localized exposure to ELF-MFs in different points of the brain were studied for providing some different protocols to treat several symptoms in psychology for future research.

## Methods

### Subjects

The subjects consisting of 20 males with the mean age of  $23.5 \pm 2.5$  years were students of Tarbiat Modares University (Tehran, Iran). All gave their informed consent. None of them had alcohol drinking and smoking experience. The participants were right-handed and did not have history for epilepsy, chronic pain or psychological disorders leading to take long-term medication. They did not drink coffee or tea at least 3 h before the recording sessions. The research protocol was approved by the Ethical Committee of Tarbiat Modares University.

### EEG measurement

Gold-plated surface electrodes (1 cm in diameter) (Thought Technology, Montreal, Canada) were placed on T3, T4, F3, F4, and Cz points (10–20 system). To facilitate quantitative comparisons, all the electrodes were referred to ears, and the ground was on the forehead. Data acquisition sampling rate was 992 Hz and a band-pass filtering was performed from 2 to 50 Hz with a 50 Hz notch filter. The obtained data were stored and analyzed off line.

### ELF-MF exposure

MFs were produced using five separate coils (2 cm in diameter, 0.5 cm in height) consisting of 250 turns of copper wire. Each coil was fixed to a C-shape ring of Plexiglas with 3 mm in thickness. The gap on the ring was for crossing of the EEG apparatus electrode wire [18]. Burst alternative current of the coil was produced by a home-made signal generator and driver that its specification was as follows: Frequency range is 0.5–100 Hz, Voltage range of sinusoidal wave is 0–4 V, Current range is 0–1A, and Duty cycle was 10–100 %. Gauss meter (Holaday Industries, Eden Prairie, MN, USA) at 1.5 cm below the Plexiglas ring on the axis of the coil showed the intensity of MF in four sessions as 0, 100, 240,  $360 \pm 10$   $\mu$ T.

### Procedure

Each subject underwent four 120 min sessions to obtain magnetic field intensities 0, 100, 240 or 360  $\mu$ T with at

least 1-day interval. All experiments were performed from 3:00 p.m. to 8:30 p.m. Each participant sat comfortably in a quiet room, instructed to relax but not to fall asleep. They were asked to focus on a fixed area to decrease eye movement. The recordings took place inside a Faraday cage ( $2 \times 1.2 \times 1.8$  m) constructed of mesh wire ( $2 \times 2$  mm) and aluminum frames. Each experiment consisted of the following stages.

After placing the EEG electrodes at each of the five points (T3, T4, F3, F4 and Cz), a recording protocol of 2 min of open-eyes and 2 min of closed-eyes was done to find out the EEG base-line for each participant. Then, the coils were placed on all of the five points by an elastic bandage of the head (surgifix). Next, two subsequent pairs of open- and closed-eyes records were taken, each with 2 min duration with 20 s intervals. Then, two more records were immediately taken concomitant to the exposure of ELF-MF, which is explained in the following subsection. This facilitates the comparison of signals recorded prior to and during the MF exposure. Cook and others did not confirm the existence of a significant persistent effect for more than 7 min after 15 min of ELF exposure [19]. Therefore, the next round of record and exposure was implemented after 10 min in a similar manner with the next frequency to guarantee the absence of persistent effect caused by the first record. Finally, after applying the exposure on the five stages, EEG recording was again taken in the absence of coils, 10 min after the exposure on the fifth stage, similar to the first record (Fig. 1).

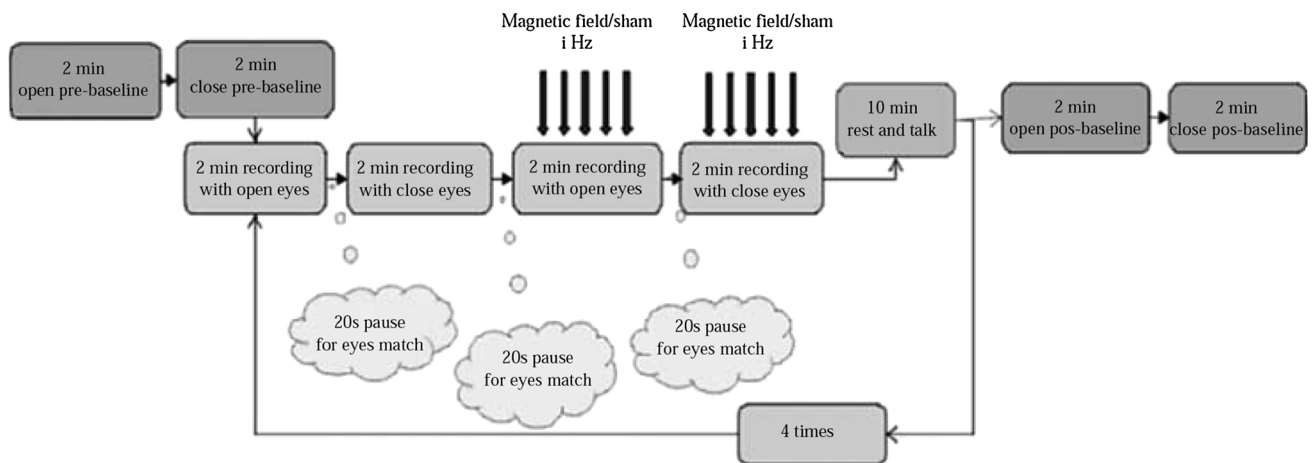
The procedure above-mentioned was also implemented for the sham sessions (intensity 0  $\mu$ T), but the signal generator did not produce any electrical signals. Thus, there was no MF.

### MFs design

In each exposure block (2 min), duration of the burst exposure was 5 s [2 s ON and 3 s OFF (Fig. 2)]. In its ON period, regarding stage of exposure in all of the five points (T4, T3, F3, Cz and F4), the frequency of sinusoidal MF was one of the 45, 17, 10, 5 or 3 Hz.

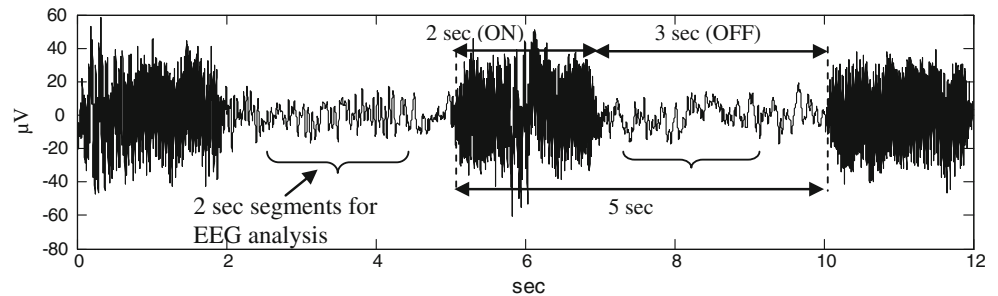
### Data analysis

In each record, the 2 s segments during the MF exposure were completely noisy than the 2 s segments, which were selected between the 3 s pauses, were extracted using MATLAB software (MathWorks, Natick, MA, USA) as segments during the MF exposure (Fig. 2). Also, prior to exposure and the sham group that did not receive exposure, 2 s records with 3 s pauses between them were performed similar to the field exposure.



**Fig. 1** Each 120 min session consisted of 5 stages plus two base-line recordings prior and subsequent to them. The 2 min recordings were separated with a 20 s pause between them

**Fig. 2** A typical EEG recording from the Cz point exposed to 45 Hz and 100  $\mu$ T ELF-MFs. Vertical axis is signal amplitude in ( $\mu$ V) and horizontal axis is time (s)



Twenty artifact free segments were selected for each state of open-eyes and closed-eyes as well as prior to and during the exposure. Also, for the control group who did not receive exposure, 2 s records with 3 s pauses between them were performed similar to the field exposure. Frequency analysis of the EEG was subsequently carried out using Fast Fourier Transform (FFT) along with Hanning filter. After averaging of the power spectra of the 20 segments, contribution of each EEG bands and its relative power spectrum was extracted. The analyzed frequency bands included: Delta (2.5–4 Hz), Theta (4.5–7.5 Hz), Alpha (8–12.5 Hz), Beta (13–30.5 Hz), and Gamma (31–47.5 Hz).

#### Statistical analysis

The relative power spectrums of EEG signals prior to and during the exposure were also compared, using paired *t* test at the significance level of  $P < 0.05$ .

To study resonance effect (RE), the values of relative power acquired at equivalent frequencies of the radiated field in the power spectrum of participants prior to and during the local MF exposure were extracted separately for the two states of open-eyes and close-eyes. Then they were

analyzed with paired *t* test at the significance level of  $P < 0.05$ .

To compare the effectiveness of MFs intensity, the Repeated Measure ANOVA was used with a significance level set at 0.05.

Finally, the EEG prior to the exposure and the EEG recorded 10 min after the last exposure was compared with paired *t* test at the significance level of  $P < 0.05$ .

#### Results

Several EEG bands were changed in each MF exposures that have been showed with Tables 1, 2, 3. In each table, recording points and frequency of exposure as well as the participant's state, i.e., with open-eyes or closed-eyes (with bold letter), are shown. Also, Tables 1, 2, 3 show the results obtained from the paired *t* test comparison of the relative power of spectra prior to and during the exposure, along with the bands with significant changes ( $P < 0.05$ ), using SPSS software.

Upward and downward arrows indicate increase and decrease of the power spectra in a particular band, respectively.

**Table 1** The exposure results of the five points by 100  $\mu$ T ELF-MF

Frequency/ recorded point	F3	F4	Cz	T3	T4
<b>45</b>	Beta↓ (0.045) <b>Alpha↓ (0.011)</b>	Beta↓ (0.046) <b>Alpha↓ (0.032)</b>	Beta↓ (0.027) <b>Alpha↓ (0.017)</b> <b>Theta↑ (0.004)</b>	<b>Alpha↓ (0.041)</b>	<b>Delta↑ (0.015)</b> <b>Alpha↓ (0.021)</b>
<b>17</b>	Delta↑ (0.004) Alpha↓ (0.004) <b>Beta↑ (0.049)</b>	Alpha↓ (0.023)	Delta↑ (0.001)	Delta↑ (0.017) Theta↑ (0.031)	NS*
<b>10</b>	NS*	NS*	NS*	NS*	Theta↑ (0.014) <b>Theta↑ (0.042)</b>
<b>5</b>	Beta↓ (0.045) Theta↑ (0.042)	NS*	<b>Delta↑ (0.045)</b>	Alpha↑ (0.005) Theta↑ (0.020)	Delta↑ (0.040)
<b>3</b>	<b>Alpha↓ (0.029)</b> <b>Beta↑ (0.047)</b> <b>Theta↑ (0.040)</b>	<b>Beta↑ (0.029)</b>	NS*	NS*	NS*

Significant changes of EEG bands in five measurement points are presented with their *P* values and also closed-eyes state showed with bold letter, ↑ increased power spectra, ↓ decreased power spectra

\* Not significant in all defined EEG bands in context

Some exposure to MF decreased alpha band of frontal and central areas in closed-eyes state (Fig. 3).

Sometime decrease in alpha band of frontal and central areas in closed-eyes state have observed during exposure to magnetic fields, especially when intensity of MFs was 240  $\mu$ T (Table 2). Investigation of the relative power at 45 Hz EEG during the 100, 240 and 360  $\mu$ T MF exposures with 45 Hz frequency in the five points revealed no significant changes as compared to the state prior to the exposure field, using paired *t* test. Also, the test showed no significant difference for the relative power of 17, 10, 5 and 3 Hz frequencies for the recorded signals at the points F4, Cz, F3, T3 and T4, when these regions were exposed to the MFs with 100, 240 and 360  $\mu$ T intensities and 17, 10, 5 and 3 Hz frequencies. These results (no significant changes) were observed for both states of open-eyes and closed-eyes.

To investigate the effectiveness of increasing intensity of ELF-MF on the power spectrum of EEG bands, a comparison was performed in the effectiveness of exposure field intensities (0, 100, 240 and 360  $\mu$ T) with Repeated Measure ANOVA. This comparison had no significant results (*P* > 0.05) that seemed to be for high standard deviation in data.

## Discussion

No regular effects were observed when intensity of MF increased from 100 to 360  $\mu$ T (Tables 1, 2, 3). For example, when all the points were exposed with 10 Hz frequency ELF-MF and intensity of MFs increased from 100 to 360  $\mu$ T EEG changed in 240  $\mu$ T, alpha band in F3 point decreased, but in 100 and 360  $\mu$ T no change was observed.

Moreover, exerting 240  $\mu$ T MF with 17 Hz frequency on the all points in open-eyes and closed-eyes states led to no significant effect while in 360 and 100  $\mu$ T were different. Similar to exposure in the entire of head that is seen in review article [17] cannot be extended with no regular effect between intensity and frequency of MFs with EEG changing (Tables 1, 2, 3) [20].

Few researchers proposed a resonance effect (RE), in which EEG power alters at the frequency of stimulation [9, 21]. Significant changes in EEG signals similar with frequency of MFs exposure were not observed in open-eyes or closed-eyes states [18, 22]. Even the observation of RE for Delta and Theta waves in the all points, which are supposed to be of cortex origin [23], was not possible. Regarding the fact, the intensities of MF produced by coil at 1.5 cm from the skin surface were 100, 240 or 360  $\mu$ T, it is rejected that no influence yields as RE with the cortex origin in exposure of MF, because the average distance of cortex layer from the external surface of skin is approximately 1.2 cm [24].

In contrary to findings of Cvetkovic and colleagues [25], the local exposure does not cause the amplification of bands in which the frequency of the applied MF is placed, for example, significant change in alpha band in open-eyes state after exposure of 10 Hz ELF-MF have not be observed (Tables 1 and 3).

Several studies have shown a correlation between alpha rhythm and cognitive performance [26, 27]. The idea, the high frequency electromagnetic fields [especially Mobile phones (MP)] can influence on the activity of the normal alpha wave on brain functioning, would be interesting. More researchers reported the MP exposure increase alpha band in EEG spectral power [28, 29]. For example, Croft et al. [30] have report

**Table 2** The exposure results of the five points by 240  $\mu$ T ELF-MF

Frequency/ recorded point	F3	F4	Cz	T3	T4
<b>45</b>	Alpha↓ (0.008) <b>Alpha↓ (0.005)</b> <b>Delta↑ (0.034)</b>	Alpha↓ (0.045) Theta↓ (0.039)	Alpha↓ (0.042)	<b>Alpha↓ (0.006)</b>	NS*
<b>17</b>	NS*	NS*	NS*	NS*	NS*
<b>10</b>	<b>Delta↑ (0.023)</b> <b>Alpha↓ (0.005)</b>	<b>Alpha↓ (0.007)</b>	<b>Delta↑ (0.042)</b> <b>Theta↑ (0.040)</b> <b>Alpha↓ (0.010)</b>	Alpha↑ (0.030) Theta↑ (0.017) <b>Alpha↓ (0.021)</b>	Beta↓ (0.025) <b>Theta↑ (0.033)</b> <b>Alpha↓ (0.027)</b>
<b>5</b>	Beta↓ (0.040) <b>Beta↑ (0.014)</b>	NS*	Beta↑ (0.023) <b>Alpha↑ (0.045)</b>	Theta↑ (0.001)	Theta↑ (0.015) Alpha↑ (0.016)
<b>3</b>	<b>Theta↑ (0.001)</b>	Delta↑ (0.025) Beta↓ (0.008) Gamma↓ (0.022) <b>Theta↑ (0.017)</b> <b>Alpha↓ (0.022)</b>	Beta↓ (0.009) <b>Theta↑ (0.005)</b> <b>Alpha↓ (0.023)</b>	<b>Theta↑ (0.048)</b>	Theta↑ (0.049) Delta↑ (0.003) Beta↓ (0.044)

Significant changes of EEG bands in five measurement points are presented with their *P* values and also closed-eyes state showed with bold letter, ↑ increased power spectra, ↓ decreased power spectra

\* Not significant in all defined EEG bands in context

**Table 3** The exposure results of the five points by 360  $\mu$ T ELF-MF

Frequency/ recorded point	F3	F4	Cz	T3	T4
<b>45</b>	<b>Alpha↓ (0.046)</b>	NS*	Theta↓ (0.010) <b>Alpha↓ (0.023)</b>	NS*	NS*
<b>17</b>	NS*	Theta↑ (0.030) Beta↓ (0.047)	NS*	<b>Theta↓ (0.033)</b>	NS*
<b>10</b>	NS*	Beta↓ (0.015)	NS*	NS*	NS*
<b>5</b>	NS*	<b>Beta↑ (0.042)</b>	NS*	NS*	Delta↑ (0.036)
<b>3</b>	<b>Delta↑ (0.023)</b>	NS*	Theta↑ (0.042) <b>Delta↑ (0.045)</b>	Theta↑ (0.049) Alpha↓ (0.037)	Alpha↑ (0.020)

Significant changes of EEG bands in five measurement points are presented with their *P* values and also closed-eyes state showed with bold letter, ↑ increased power spectra, ↓ decreased power spectra

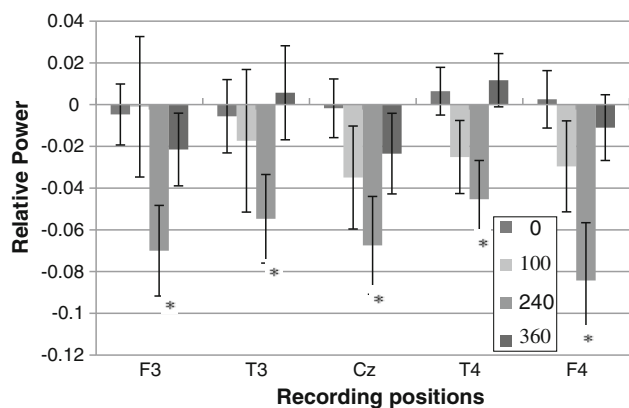
\* Not significant in all defined EEG bands in context

significant increase in alpha band after the MP exposure. This effect was greater when the MP was on during the EEG recording session than before it [31]. While the effects in the brain signals, which we have observed during exposure to magnetic fields, were a decrease in alpha band.

The alpha rhythm is temporarily blocked by an influx of light (eye opening), other afferent stimuli (auditory, tactile, and other somatosensory stimuli), and mental activities. Some exposures to MF decreased alpha band of frontal and central areas in closed-eyes state, especially 45 Hz, 360  $\mu$ T (Fig. 3) and 10 Hz [10], 240  $\mu$ T (Fig. 3) were more effective. Like other senses, does the brain make sense the MFs directly due to such changes?

In applying the exposure to overall head, the central part is rarely influenced by the exposure, and if any effect occurs, this will increase the alpha band [12], which is opposite with the findings of the present study. The increase in delta, theta bands (slow wave) and reduction of beta and alpha bands can be explained by the exposure of the five points.

But based on the findings, we may design some protocols using a combination of various exposures to change the EEG band of specific points of the head; e.g., for example one of the anti-ADHD protocols used in neuro-feedback training technique is reducing the theta band and increasing the beta band at position Cz (International



**Fig. 3** The mean of subtraction of the relative power of alpha band in recorded brain signals, during Exposure ELF-MFs, in comparison prior to exposure in closed-eyes state (Mean  $\pm$  SE) when all of F3, T3, Cz, T4 and F4 points have been exposed with 0 (sham), 100, 240 or 360  $\mu$ T MF in 10 Hz frequency. Significant effect ( $P < 0.05$ ) showed with (asterisk)

10–20 System; Jasper, 1958) [32]. Therefore, to achieve this situation we may expose 360  $\mu$ T MF with a frequency of 45 Hz (Table 3), for reducing the theta band and expose 240  $\mu$ T MF with a frequency of 5 Hz, for increasing the beta band (Table 2), or decreasing of beta band in alcoholics [33] by expose of 45 Hz, 100  $\mu$ T ELF-MF. So we may conduct the brain and the brain signals using special ELF-MF exposure which has no certain harmful side effects. We suggest that similar to neurofeedback training (treating some disorders based on the changing of the EEG bands [34, 35]), the change of the EEG bands is done by exposure to some areas of the head with various intensities and frequencies, with regard to the results of the present paper for treating some symptoms in the next researches.

**Acknowledgments** The authors would like to thank all subjects for kindly participating in our study and special thanks to S. A Sabbagh for editing this paper.

## References

- Gurgul S, Erdal N, Yilmaz SN, Yildiz A, Ankarali H (2008) Deterioration of bone quality by long-term magnetic field with extremely low frequency in rats. *Bone* 42(1):74–80
- Novikov VV, Novikov GV, Fesenko EE (2009) Effect of weak combined static and extremely low-frequency alternating magnetic fields on tumor growth in mice inoculated with the Ehrlich ascites carcinoma. *Bioelectromagnetics* 30(5):343–351
- Podd J, Abbott J, Kazantzis N, Rowland A (2002) Brief Exposure to a 50 Hz, 100  $\mu$ T Magnetic Field: effects on Reaction Time, Accuracy, and Recognition Memory. *Bioelectromagnetics* 23(3):189–195
- Trimmel M, Schweiger E (1998) Effects of an ELF (50 Hz, 1 mT) electromagnetic field (EMF) on concentration in visual attention, perception and memory including effects of EMF sensitivity. *Toxicol Lett* 96–97:377–382
- Pelka RB, Jaenicke C, Gruenwald J (2001) Impulse magnetic-field therapy for migraine and other headaches: a double-blind, placebo-controlled study. *Adv Ther* 18(3):101–109
- Sieroń A, Hese RT, Sobiś J, Cieślar G (2004) Estimation of therapeutical efficacy of weak variable magnetic fields with low value of induction in patients with depression. *Ocena skuteczności terapeutycznej słabych zmiennych pól magnetycznych o niskiej wartości indukcji u chorych z zaburzeniami depresyjnymi* 38(2):217–225
- Sobiś J, Jarzab M, Hese RT, Sieroń A, Zyss T, Gorczyca P, Gierlotka Z, Pudło R, Matysiakiewicz J (2010) Therapeutic efficacy assessment of weak variable magnetic fields with low value of induction in patients with drug-resistant depression. *J Affect Disord* 123(1–3):321–326
- Bell GB, Marino AA, Chesson AL (1992) Alterations in brain electrical activity caused by magnetic fields: detecting the detection process. *Electroencephalogr Clin Neurophysiol* 83(6):389–397
- Bell GB, Marino AA, Chesson AL (1994) Frequency-specific responses in the human brain caused by electromagnetic fields. *J Neurol Sci* 123(1–2):26–32
- Bell GB, Marino AA, Chesson AL (1994) Frequency-specific blocking in the human brain caused by electromagnetic fields. *NeuroReport* 5(4):510–512
- Cook CM, Saucier DM, Thomas AW, Prato FS (2009) Changes in human EEG alpha activity following exposure to two different pulsed magnetic field sequences. *Bioelectromagnetics* 30(1):9–20
- Ghione S, Del Seppia C, Mezzasalma L, Bonfiglio L (2005) Effects of 50 Hz electromagnetic fields on electroencephalographic alpha activity, dental pain threshold and cardiovascular parameters in humans. *Neurosci Lett* 382(1–2):112–117
- Heusser K, Telschaft D, Thoss F (1997) Influence of an alternating 3 Hz magnetic field with an induction of 0.1 millitesla on chosen parameters of the human occipital EEG. *Neurosci Lett* 239(2–3):57–60
- Lyskov EB, Juutilainen J, Jousmaki V, Partanen J, Medvedev S, Hanninen O (1993) Effects of 45-Hz magnetic fields on the functional state of the human brain. *Bioelectromagnetics* 14(2):87–95
- Marino AA, Bell GB, Chesson A (1996) Low-level EMFs are transduced like other stimuli. *J Neurol Sci* 144(1–2):99–106
- Cvetkovic D, Cosic I (2009) Alterations of human electroencephalographic activity caused by multiple extremely low frequency magnetic field exposures. *Med Biol Eng Comput* 47(10):1063–1073
- Cook CM, Thomas AW, Prato FS (2002) Human electrophysiological and cognitive effects of exposure to ELF magnetic and ELF modulated RF and microwave fields: a review of recent studies. *Bioelectromagnetics* 23(2):144–157
- Shafiei SA, Firoozabadi SM, Rasoulzadeh Tabatabaie K, Ghabae M (2012) Study of the frequency parameters of EEG influenced by zone-dependent local ELF-MF exposure on the human head. *Electromagn Biol Med* 31(2):112–121. doi:10.3109/15368378.2011.624658
- Cook CM, Thomas AW, Prato FS (2004) Resting EEG Is Affected by Exposure to a Pulsed ELF Magnetic Field. *Bioelectromagnetics* 25(3):196–203
- Amirifalah Z, Firoozabadi SM, Shafiei SA (2013) Local Exposure of Brain Central Areas to a Pulsed ELF Magnetic Field for a Purposeful Change in EEG. *Clin EEG Neurosci* 44(1):44–52. doi:10.1177/1550059412460164
- Bell G, Marino A, Chesson A, Struve F (1992) Electrical states in the rabbit brain can be altered by light and electromagnetic fields. *Brain Res* 570(1–2):307–315
- Darabi SAS, Firoozabadi SM, Tabatabaie KR, Ghabae M (2010) EEG changes during exposure to extremely low frequency magnetic field on a small area of brain. *koomesh* 12(2):167–174
- Guyton AC, Hall JE (2000) Textbook of medical physiology. Saunders, Philadelphia

24. Rush S, Driscoll DA (1969) EEG electrode sensitivity—an application of reciprocity. *IEEE Trans Biomed Eng* 16(1):15–22
25. Cvetkovic D, Cosic I (2006) Automated ELF Magnetic Field Stimulation of the Human EEG Activity. *Integrated Computer-Aided Engineering* 13(4):313–328
26. Klimesch W (1999) EEG alpha and theta oscillations reflect cognitive and memory performance: a review and analysis. *Brain Res Brain Res Rev* 29(2–3):169–195
27. Krause CM, Sillanmaki L, Koivisto M, Haggqvist A, Saarela C, Revonsuo A, Laine M, Hamalainen H (2000) Effects of electromagnetic field emitted by cellular phones on the EEG during a memory task. *NeuroReport* 11(4):761–764
28. Croft RJ, Chandler JS, Burgess AP, Barry RJ, Williams JD, Clarke AR (2002) Acute mobile phone operation affects neural function in humans. *Clinical neurophysiology : official journal of the International Federation of Clinical Neurophysiology* 113(10):1623–1632
29. Reiser H, Dimpfel W, Schober F (1995) The influence of electromagnetic fields on human brain activity. *European journal of medical research* 1(1):27–32
30. Croft RJ, Hamblin DL, Spong J, Wood AW, McKenzie RJ, Stough C (2008) The effect of mobile phone electromagnetic fields on the alpha rhythm of human electroencephalogram. *Bioelectromagnetics* 29(1):1–10. doi:[10.1002/bem.20352](https://doi.org/10.1002/bem.20352)
31. Curcio G, Ferrara M, Moroni F, D’Inzeo G, Bertini M, De Gennaro L (2005) Is the brain influenced by a phone call? An EEG study of resting wakefulness. *Neurosci Res* 53(3):265–270. doi:[10.1016/j.neures.2005.07.003](https://doi.org/10.1016/j.neures.2005.07.003)
32. Beauregard M, Levesque J (2006) Functional magnetic resonance imaging investigation of the effects of neurofeedback training on the neural bases of selective attention and response inhibition in children with attention-deficit/hyperactivity disorder. *Appl Psychophysiol Biofeedback* 31(1):3–20. doi:[10.1007/s10484-006-9001-y](https://doi.org/10.1007/s10484-006-9001-y)
33. Rangaswamy M, Porjesz B, Chorlian DB, Wang K, Jones KA, Bauer LO, Rohrbaugh J, O’Connor SJ, Kuperman S, Reich T, Begleiter H (2002) Beta power in the EEG of alcoholics. *Biol Psychiatry* 52(8):831–842 S0006322302013628
34. Evans JR, Abarbanel A (1999) Introduction to quantitative EEG and neurofeedback. Academic Press, San Diego
35. Budzynski T (2009) Introduction to quantitative EEG and neurofeedback : advanced theory and applications. Elsevier, Amsterdam